



## HOT DRINKS

### Coffee

Flat White, Cappuccino, Long Black, Latte, Espresso, Chai Latte

+ Extra Shot

+ Soy Milk or Almond Milk

+ Oat Milk or Lactose Free Milk

### Tea

Black, Green, English Breakfast, Peppermint



## DESSERTS

### Sticky Date Pudding

With vanilla icecream

### Pecan Tart

With vanilla icecream

### Apple Pie

With vanilla icecream



## MILKSHAKES

### Vanilla

### Chocolate

### Strawberry

### Caramel

### Iced-Coffee

Made with milk and ice-cream

## ALCOHOLIC BEVERAGES

### Pre Mix

Jack Daniels & Cola

Jim Beam & Cola

Bundy & Cola

Canadian Club & Dry

Gordons Gin & Tonic

Matso's Ginger Beer

### Beer

Carlton Dry

Emu Export

VB

XXXX

Great Northern

Corona

### Wines, 750ml

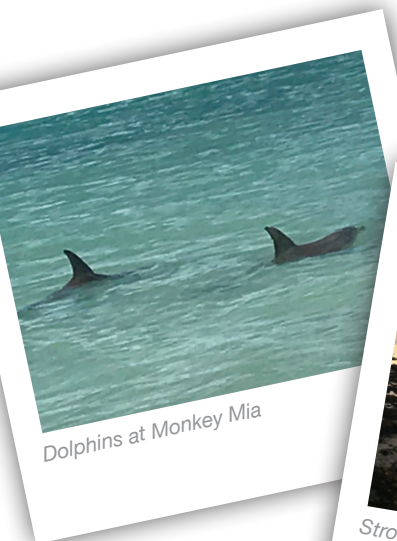
House Red or White

Premium Red or White

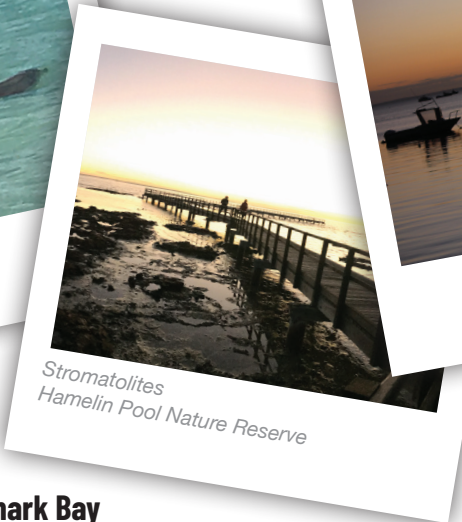
### Wines, 375ml

Semillon Sauvignon Blanc

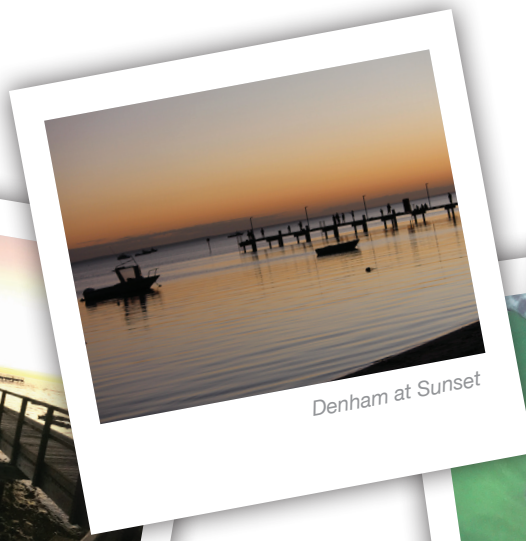
Shiraz



Dolphins at Monkey Mia



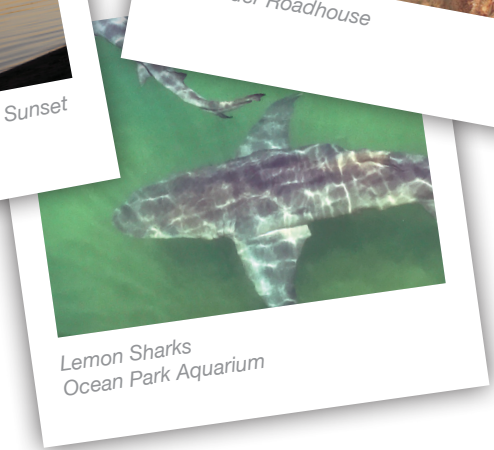
Stromatolites  
Hamelin Pool Nature Reserve



Denham at Sunset



Overlander Roadhouse



Lemon Sharks  
Ocean Park Aquarium

## Welcome to the Shark Bay World Heritage Area

Overlander Roadhouse is located at the gateway to the Shark Bay World Heritage Area, approximately 130km from the town of Denham. The remoteness of Overlander Roadhouse has led to the surrounding area being known as Overlander, although there is no official locality.

The Shark Bay World Heritage Area became Western Australia's first world heritage listed area in 1991. It is one of two World Heritage areas within WA and one of only 16 Australia wide. Shark Bay World Heritage Area is a testimony to the wonders of the natural world.

Famous for its friendly Monkey Mia Dolphins, there are few places in the world where you can experience marine wonders as you can in Shark Bay - you're likely to spot turtles, dolphins, manta rays, whales and dugongs.

Also located in the Shark Bay World Heritage Area is Steep Point - the most western point of mainland Australia, featuring the magnificent Zuytdorp Cliffs towering 170m above sea level. Steep Point is accessible only by 4WD and travellers must bring all their own supplies and drinking water - and leave only their footprints.

Further west, and only accessible by boat or 4WD barge is Dirk Hartog Island National Park. Dirk Hartog Island is WA's largest and most western island. The island was named after Dirk Hartog, a Dutch sea captain who first

encountered the WA coastline and landed on the island in 1616. Early explorers Willem de Vlamingh (1697), Nicolas Baudin (1801) and Louis de Freycinet (1818) also landed on Dirk Hartog Island. Dirk Hartog Island boasts the last sunset in Australia - you can watch the sunset overlooking the Indian Ocean from the highest point of the island - Herald Heights, some 600ft above sea level.

Closer to Overlander Roadhouse, at Hamelin Pool Marine and Nature Reserve, you can view the oldest and largest living fossils in the world, the Stromatolites. Stromatolites today are rare, and Hamelin Pool Marine and Nature Reserve boasts the most diverse and abundant examples of living marine stromatolites in the world, monuments to life on Earth over 3,500 million years ago.